



ANBAR: DISPLACEMENT AT A GLANCE

Total post-Feb 2006 IDPs ¹	10,258 families (est. 61,548 individuals)
Total pre-Feb 2006 IDPs ²	1,025 families (est. 6,150 individuals)
Number of post-Feb 2006 IDPs assessed by IOM ³	3,974 families (est. 23,844 individuals)
Returnees ⁴	7,152 families (est. 42,912 individuals)
Capital	Ramadi
Districts	Fallujah, Al-Ka'im, Ramadi, Ana, Haditha, Heet, Al-Rutba, Ra'ua
Population ⁵	1,485,985 individuals

The vast majority of Anbar's internally displaced persons (IDPs) are Sunni Arab families who fled sectarian violence in Baghdad and generalized violence within Anbar during 2006. Many would like to resettle in a third location (44%) while others would like to return to their homes, should security allow (34%). Indeed, some have already begun to do so as security has improved. IOM has identified more than 7,000 families displaced after 2006 who have returned to Anbar.

Returnees in Anbar are particularly in need of healthcare, food and water. Those who are currently displaced in this governorate additionally cite shelter and access to work as priority needs. A closer look at this governorate reveals that in Anbar, as is the case elsewhere in Iraq, employment and health services are needed to provide durable solutions for vulnerable Iraqis.

Quick Facts on Anbar IDPs & Returnees



- Families leaving their homes in Anbar fled to every governorate in Iraq, but most were displaced to Baghdad.
- Anbar also hosts a large IDP community that originates from Baghdad (70%) and Ninewa (13%).
- More than 90% of IDPs are without sufficient access to work or food, while returnees also cite water and health as major concerns.

¹ As per the Iraq Ministry of Displacement and Migration, 2009.

² As per IOM Phase II Monitoring, May 2008 for Anbar.

³ Please note that this is the number of post-February 2006 IDPs assessed by IOM, not the total number of IDPs in the governorate.

⁴ As per IOM Returnee Monitoring.

⁵ As per the Iraq Central Organization for Statistics and Information Technology, 2007.

IOM Displacement Assessments

Iraq has a long history of displacement, the most recent significant event being the February 2006 bombing of the Samarra Al-Askari Mosque. Due primarily to sectarian violence, 1.6 million people were internally displaced, chiefly in 2006 and 2007, according to government figures.¹

IOM field monitoring teams assess the varying needs and challenges of internally displaced persons (IDPs) and returnee communities across the eighteen Iraqi governorates. These comprehensive assessments of IDPs and returnees are conducted through Rapid Assessment questionnaires in conjunction with the assessments of Iraqi authorities and other national and international actors.

IOM seeks to ascertain and disseminate detailed information about IDP and returnee needs and conditions in each governorate. Our objective is to promote a greater understanding of displacement and return in Iraq by facilitating policy making, prioritizing areas of operation, planning emergency responses, and designing long-term programs.

To date, IOM has assessed 202,446 IDP families and identified 67,086 returnee families. Of these returnee families, 10,368 have participated in IOM in-depth needs assessment interviews. Unless otherwise stated, all data in the profile is based on IOM-assessed populations.

Recent IOM Activity in Anbar

Community Regeneration and Local Governance Project



The Al Hamd school in the Al Naemyah village was refurbished and a classroom was added between March and June 2010. While helping to build the capacity of local community councils, the project assisted 465 returnee families and their host communities.

For more information on IOM's past activities in Anbar, see *Activities in Anbar* at:

ANBAR DISPLACEMENT BACKGROUND

According to the Iraqi Ministry of Displacement and Migration statistics as of 2009, there were 10,258 IDP families displaced in Anbar amounting to 3.7% of all of Iraq's displaced. IOM monitors have assessed 3,974 of the families that remain there.

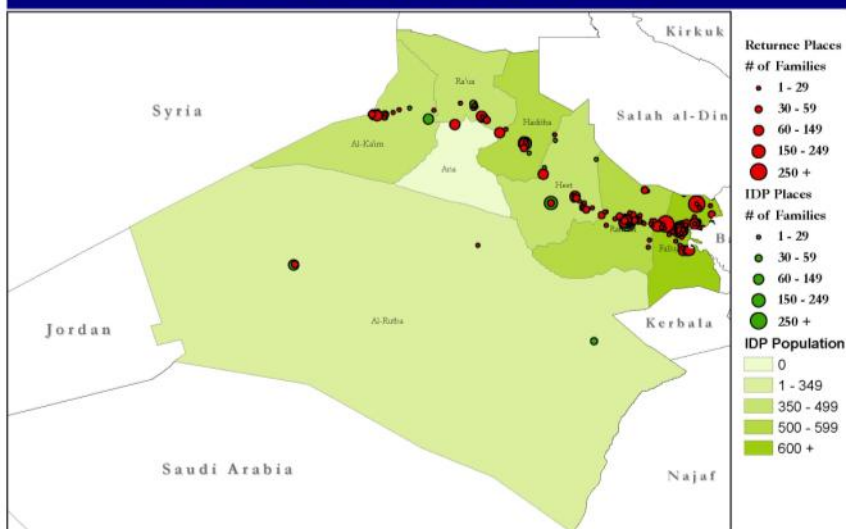
Sectarian displacement to Anbar occurred primarily in 2006 and early 2007. There were spikes in the displacement rate as various military operations took place in the governorate, which was the site of heavy fighting. Past displacement flows also resulted from 2004 counter-insurgency Multi-National Force-Iraq (MNF-I) operations in Fallujah, displacing almost the entire city (250,000). The vast majority (94%) of Anbar IDPs are Sunni Arab families, many of whom fled sectarian violence in Baghdad and generalized violence from within Anbar. Post-Samarra displacement accounts for nearly 90% of current Anbar IDPs, most of whom were displaced from Baghdad or Ninewa. Since 2004, many have returned while others remain displaced in Baghdad.

The Post-Samarra IDP flow into Anbar peaked in October 2006 and dropped precipitously at the end of 2006. Like other governorates, very few new IDPs have arrived in Anbar since 2007, though the total number of IDPs remains high. Moreover, though the rate of displacement has slowed, new displacements can still occur as happened in April this year when 43 new families were displaced to the governorate.

Number of IDPs in Anbar by District		
District	Families	%
Total Anbar	3974	100%
Al-Ka'im	353	9%
Al-Rutba	361	9%
Ana	243	6%
Falluja	785	20%
Haditha	593	15%
Heet	561	14%
Ramadi	844	21%
Ra'ua	234	6%

IDP Governorate of Origin	
Within Anbar	2.2%
Baghdad	70.2%
Basrah	6.7%
Diyala	1.8%
Ninewa	12.7%
Salah al-Din	4.0%
Thi-Qar	1.1%

Anbar: IDP and Returnee Locations

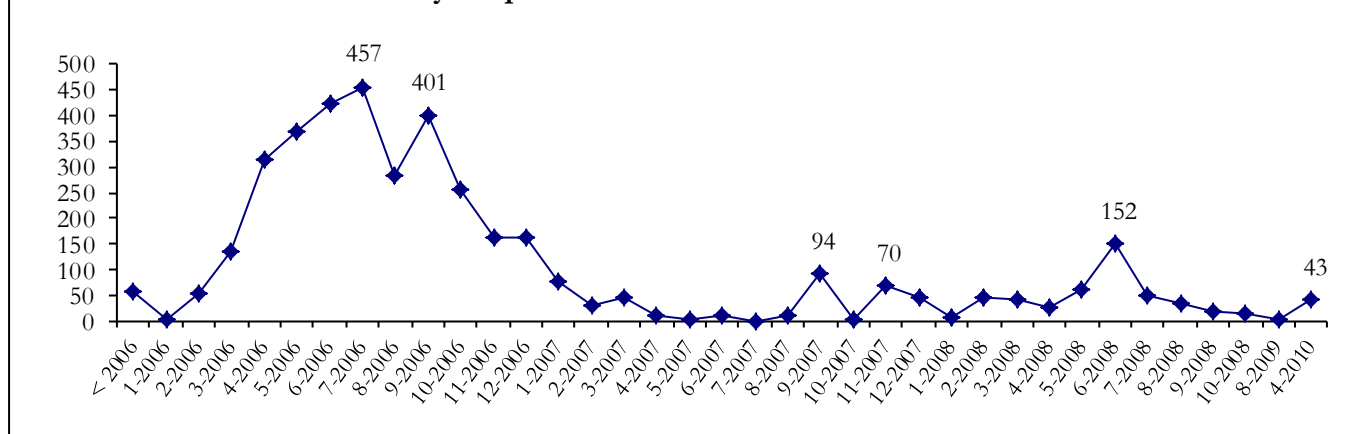


SHELTER

IDP children in Hay Al Ameen in Anbar

Reason for Displacement	Anbar	All Iraq
Armed conflict	1.0%	6.9%
Direct threats of life	23.4%	27.5%
Drought	10.8%	2.3%
Forced displacement	30.2%	9.4%
Generalized violence	12.8%	10.9%
Left out of fear	2.6%	13.2%
No Answer	18.5%	27.3%
Other	0.6%	0.4%

Monthly Displacement to Anbar Since 2006



ANBAR: IDP DEMOGRAPHICS

Few of the IDPs who left their homes in Anbar remained in the governorate, with over 45% leaving to Baghdad, Muthanna or Thi-Qar. These three governorates host IDPs which are largely Arab Shia Muslim, which may explain why they were the destination for families leaving Anbar, over 60% of which were also Arab Shia Muslim.

The vast majority (94%) of IDPs currently in Anbar are Sunni Muslim, reflecting the ethno-religious composition of their broader host communities. Nevertheless, IDPs are not distributed evenly by their identity throughout the governorate. For instance, the district of Al-Rutba hosts a significant IDP community of 137 Arab-Shia Muslims, which represent 38% of all IDPs in the district. Al-Ka'im also has a number of Kurd-Shia Muslims. Monitors report that incidents of sectarian violence are becoming less frequent in the governorate although IDPs still report low feelings of personal security due to employment and health concerns.

Of those assessed, 64% of IDPs are under the age of 18. The challenges for this disproportionately young IDP population are to provide adequate educational outlets as well as provision of food, shelter, and economic support. Many educational facilities in Anbar require rehabilitation due to age and destruction during the past years' fighting. The average family in Iraq is comprised of 6 members, and this often includes at least one elderly member. Anbar is no exception, with 665 IDPs aged over 60. The specific health concerns of these family members is one of the reasons that 12% of IDPs cite health as a priority need. Monitors report that in many of the places they visit, the healthcare centres that serve IDPs and host communities are without doctors or medical supplies.



EDUCATION

An IOM project conducted in Anbar last year where temporary classrooms were constructed for local children

IDPs Originally from Anbar are located in:		
Governorate	# Families	Percentage
Anbar	87	2.0%
Babylon	81	1.9%
Baghdad	962	22.5%
Basrah	301	7.0%
Dahuk	6	0.1%
Diyala	71	1.7%
Erbil	43	1.0%
Kerbala	340	7.9%
Kirkuk	427	10.0%
Missan	64	1.5%
Muthanna	491	11.5%
Najaf	76	1.8%
Ninewa	87	2.0%
Qadissiya	137	3.2%
Salah al-Din	346	8.1%
Sulaymaniyah	203	4.7%
Thi-Qar	475	11.1%
Wassit	87	2.0%
Total Assessed	4284	100%

IDPs by Age and Gender			
Age	Female	Male	Total
Under 1 year old	182	227	409
1 to 4 years old	1896	1928	3824
5-17 years old	3815	4103	7918
18-60 years old	3058	3052	6110
Over 60 years old	324	341	665

Ethno-Religious Identity of IDPs in Anbar (by District)

District	Arab-Shia Muslim	Arab-Sunni Muslim	Kurd-Shia Muslim
Total Anbar	4.8%	94.4%	0.5%
Al-Ka'im	4.8%	89.5%	5.7%
Al-Rutba	38.0%	62.0%	0.0%
Ana	0.0%	100.0%	0.0%
Falluja	4.3%	95.5%	0.0%
Haditha	0.5%	99.5%	0.0%
Heet	0.0%	100.0%	0.0%
Ramadi	0.0%	98.6%	0.0%
Ra'ua	0.0%	100.0%	0.0%



DISPLACED FAMILIES

See IDP Needs page 4

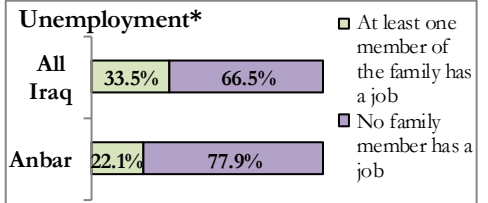
From disability to lack of shelter, IDPs in Anbar face a number of obstacles to achieving long-term security.

ANBAR'S DISPLACED: LIVING CONDITIONS AND PRIORITY NEEDS

When IDPs initially arrived in Anbar, many were staying in the homes of host community members or relatives. However, as displacement is prolonged, IDPs have increasingly begun to rent housing. This has not translated to greater stability for displaced families, as 75% of IOM-assessed IDPs in Anbar list shelter as a priority need. Though electricity and water services in Anbar are better than average in Iraq, rising rent prices and difficulties in gaining access to work make it difficult for IDPs to sustain their housing costs.

Employment is a particularly pressing concern as 78% of IOM-assessed returnee families in Anbar report that they have no members employed. This is also a concern for host communities, but as 94% of IDPs in the governorate cite access to work as a priority need (compared to an average of 77.5% across Iraq) displaced families in Anbar seem to be particularly vulnerable to economic insecurity. Monitors report that despite the number of graduates in the governorate, there are insufficient teachers, and skilled jobs are scarce. As a result, those who are able to find employment often do so in the construction or farming sectors, placing an additional barrier to women entering the job market.

For the 334 IDP families in Anbar that live in tents, public buildings or collective town settlements, life remains precarious. These families are more vulnerable to evictions from local authorities and are therefore more likely to suffer from secondary displacement, depriving them of the long-term stability needed to rebuild their lives.



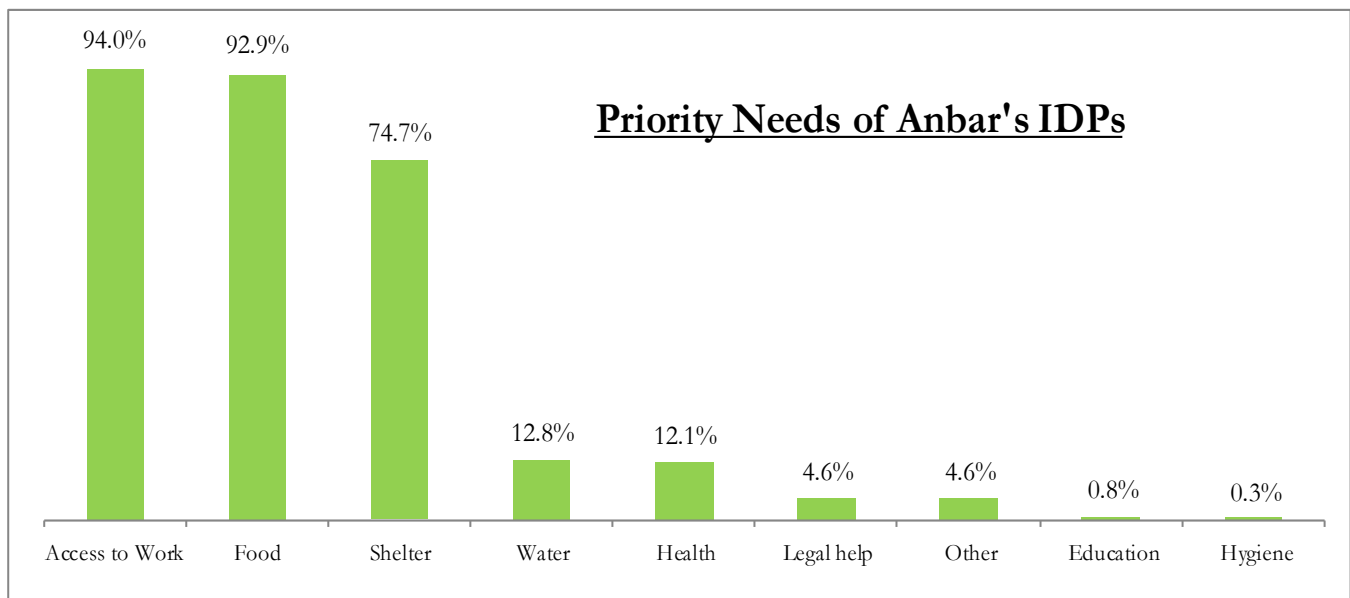
Assessed Returnee PDS Access*	Anbar	All Iraq
Not at all	0.0%	3.3%
Yes, not regular	9.1%	28.7%
Yes, regular	90.3%	67.3%
No Answer	0.7%	0.7%

Assessed Returnee Electricity*	Anbar	All Iraq
No Electricity	0.0%	1.3%
1-10 hours per day	96.3%	78.5%
More than 10 hours per day	3.5%	17.4%
No Answer	0.3%	2.8%

Assessed Returnee Water Source*	Anbar	All Iraq
Municipal water (underground pipes)	94.5%	80.5%
Water tanks / trucks	1.4%	6.5%
Public Wells	2.2%	2.3%
Rivers, streams or lakes	0.6%	6.7%
Open / broken pipe	0.8%	3.0%
Other Sources	0.0%	0.1%

* From IOM assessments of returnee families

Living Structure (by district)							
District	Tent in a Camp	Collective town Settlement	Tent near host house	Public building	Host house	Rented house	Other
Anbar Total	1.4%	2.8%	2.5%	1.7%	3.5%	80.2%	7.9%
Al-Ka'im	10.5%	0.0%	9.6%	0.0%	0.0%	54.7%	25.2%
Al-Rutba	0.0%	0.0%	0.0%	0.0%	1.1%	98.9%	0.0%
Ana	0.0%	0.0%	0.0%	0.0%	4.5%	95.1%	0.4%
Falluja	2.3%	0.0%	0.0%	3.6%	3.4%	84.8%	5.9%
Haditha	0.0%	13.3%	9.9%	0.0%	2.2%	72.5%	2.0%
Heet	0.0%	3.4%	0.5%	1.6%	9.1%	67.7%	17.6%
Ramadi	0.0%	1.5%	0.5%	3.7%	4.1%	82.5%	7.7%
Ra'ua	0.0%	0.0%	0.0%	0.0%	0.0%	100.0%	0.0%



ANBAR'S RETURNEES

To date, IOM monitors have identified 7,152 returnee families in Anbar and have conducted in-depth interviews with 1,067 (15%) of these families. Most of these families have returned to Falluja and Ramadi districts, which were also the sites of significant displacement.

220 of the IOM interviewed returnee families (20%) in Anbar were displaced abroad. Most of these families have mainly returned from Syria, but small numbers also came back from Jordan and Egypt. Although families that left Anbar fled to all governorates (see page 3), 85% of those who return from within Iraq are those who were displaced within Anbar.

Assessed Female-Headed Returnee Households (by district)	
District	Percentage
Total Anbar	10.7%
Al-Ka'im	0.0%
Al-Rutba	0.0%
Falluja	13.4%
Haditha	0.0%
Heet	25.0%
Ramadi	9.2%
Ra'ua	0.0%

Families returning to Anbar cite a number of reasons for their choice. Improved security in their area of origin is frequently reported, particularly in districts such as Ana and Haditha. In places such as Ra'ua, families also cite difficult conditions in their place of displacement as being important considerations in making the choice to return home.

Assessed Returnee Numbers in Anbar by District		
District	Number of Families	Percentage
Anbar Total	5912	100%
Al-Ka'im	369	6.2%
Al-Rutba	222	3.8%
Ana	504	8.5%
Falluja	2479	41.9%
Haditha	161	2.7%
Heet	592	10.0%
Ramadi	1367	23.1%
Ra'ua	216	3.7%

As a governorate, Anbar has a lower percentage of female headed returnee households than the 13% average across Iraqi returnee-households. Nevertheless, certain districts in Anbar do have high concentrations of women returning who are the head of their families. For example, 1 in 4 of the returnee families in the Heet district of Anbar is headed by a female, some of whom are divorcees or widows. These families often face additional obstacles in securing a steady income, as evidenced by the 92% of interviewed female headed households which were unemployed. Moreover, families which are headed by women can find it more difficult to advocate for themselves with respect to social and bureaucratic issues.

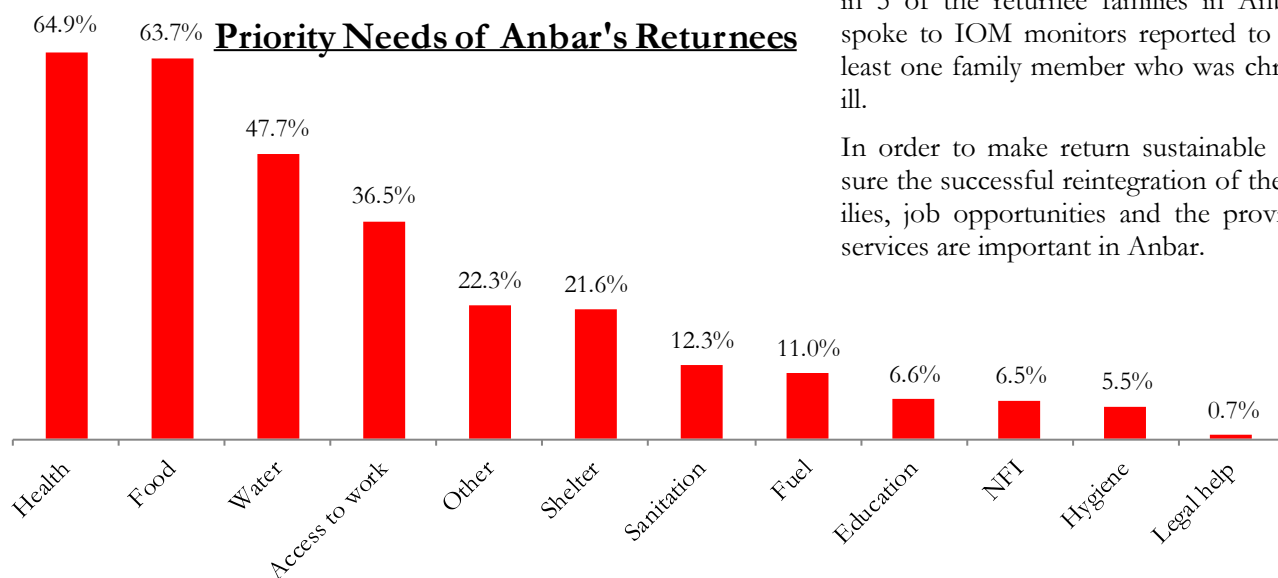
Though some have secured shelter before returning to their neighbourhoods, returnee families still have needs which must be addressed for their long-term stability. Returnee families in Anbar cite health, food and water as their highest priorities, as do other returnees in Iraq. However, health concerns among Anbar's returnees are higher than average across Iraq, where 42.1% cite health as a concern. This is probably linked to the fact that 1 in 5 of the returnee families in Anbar that spoke to IOM monitors reported to have at least one family member who was chronically ill.

In order to make return sustainable and ensure the successful reintegration of these families, job opportunities and the provision of services are important in Anbar.



A returnee family, in the Al-Joulan district of Fallujah in Anbar

Assessed Returnee Reason for Return		
District	Improved security in origin area	Improved security in origin area & Very difficult conditions in displacement
Anbar Total	62.0%	37.6%
Al-Ka'im	86.8%	13.2%
Al-Rutba	84.6%	15.4%
Ana	97.2%	2.8%
Falluja	63.9%	35.6%
Haditha	90.0%	0.0%
Heet	76.8%	23.2%
Ramadi	54.4%	45.4%
Ra'ua	15.4%	84.6%

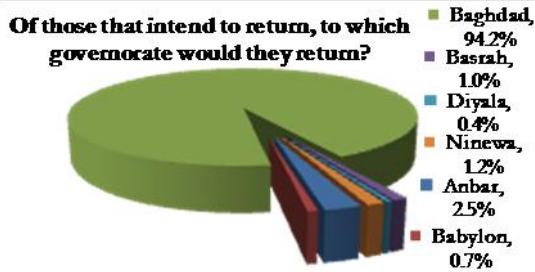


RETURN POTENTIAL

Along with Baghdad, Diyala and Ninewa, Anbar was one of the governorates which witnessed a large exodus of families during the post-2006 violence. Consequently Anbar is also among the governorates with the highest potential for concentrated return.

IOM has assessed 4,284 families displaced from Anbar, dispersed widely throughout Iraq, with the largest concentrations in Baghdad (23%), Muthanna (12%) and Thi-Qar (11%).

The vast majority of IDPs displaced within their home governorate of Anbar wish to return to their places of origin. Some of these intentions have already been fulfilled as



many of those that have returned were displaced within Anbar. By contrast, most of the families that were displaced from Anbar to Baghdad and Muthanna wish to stay in their current locations, which is significant as these governorates also host the largest number of IDPs from Anbar (see page 3). These families need livelihood and property assistance if they are going to successfully integrate into a new community.

The majority of families that are currently displaced in Anbar tell IOM monitors that they would like to resettle in a third location (44%) or return to their place of origin (34%). Many potential returnee families state that they are waiting for the security situation to improve before they return. Others are concerned about property issues or the lack of job opportunities in their place of origin.

Anbar IDP Settlement Intentions				
District	Locally integrate in the current location	Resettle in a third location	Return to their place of origin	Waiting on one or several factors to make a decision
Anbar Total	16.3%	44.0%	34.1%	4.8%
Al-Ka'im	5.3%	2.5%	0.2%	0.0%
Al-Rutba	0.3%	5.0%	3.9%	0.0%
Ana	0.1%	4.4%	1.6%	0.0%
Falluja	1.7%	5.7%	10.7%	1.7%
Haditha	0.9%	11.8%	2.2%	0.0%
Heet	5.8%	6.6%	1.2%	0.6%
Ramadi	2.2%	5.2%	11.3%	2.5%
Ra'ua	0.1%	2.6%	3.1%	0.1%

What are the intentions of those displaced FROM Anbar?

Displaced in	Integrate into the current location	Resettle in a third location	Return to their place of origin	Waiting to Decide
All IDPs from Anbar	64.6%	13.4%	13.8%	8.2%
Anbar	5.7%	5.7%	39.1%	49.4%
Babylon	92.6%	6.2%	1.2%	0.0%
Baghdad	48.1%	15.4%	16.0%	20.5%
Basrah	86.4%	11.6%	2.0%	0.0%
Dahuk	33.3%	66.7%	0.0%	0.0%
Diyala	70.4%	0.0%	23.9%	5.6%
Erbil	27.9%	4.7%	62.8%	4.7%
Kerbala	79.7%	16.5%	3.8%	0.0%
Kirkuk	84.4%	10.9%	4.7%	0.0%
Missan	93.9%	3.7%	2.4%	0.0%
Muthanna	68.4%	0.0%	31.6%	0.0%
Najaf	14.9%	81.6%	3.4%	0.0%
Ninewa	85.4%	10.9%	3.6%	0.0%
Qadissiya	40.8%	21.4%	13.6%	24.3%
Salah al-Din	46.3%	7.9%	45.3%	0.5%
Sulaymaniyah	70.0%	11.9%	13.3%	4.7%
Thi-Qar	70.7%	9.9%	19.4%	0.0%
Wassit	73.6%	20.7%	5.7%	0.0%



MONITORING

An IDP family from Ninewa speaks to IOM and MoDM in Al Qaim, Anbar earlier this year

Please note that displacement and return are occurring on a continuous basis, and IOM strives to update this information as frequently as possible. Through its monitoring and needs assessments, IOM has also developed periodic displacement updates, yearly and mid-year reviews, returnee needs assessments, and other reports. For these and information on the IOM's needs assessment methodology, see <http://www.iomiraq.net/idp.html>

For further information on IDPs and returnees in Iraq, please contact Rex Alamban, Head of IOM Iraq Joint Operations Cell at ralamban@iom.int or Liana Paris, IOM Monitoring Officer, at lparis@iom.int (+962 6 565 9660).

Anbar: IDP and Returnee Locations

