

# MISSAN

GOVERNORATE PROFILE FEBRUARY 2010  
IOM IDP AND RETURNEE ASSESSMENT



## MISSAN: DISPLACEMENT AT A GLANCE

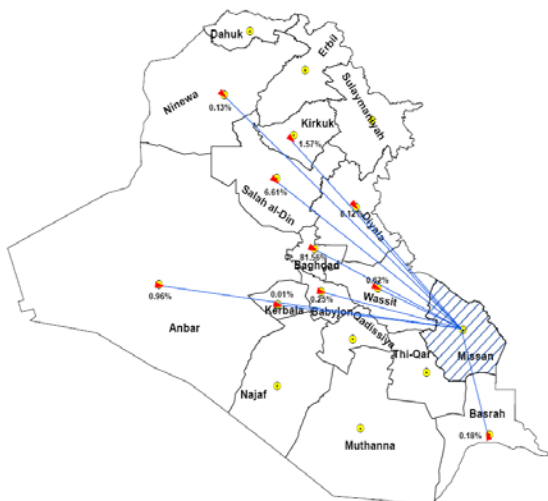
Total post-Feb 2006 IDPs <sup>1</sup>	7,269 families (est 49,776 individuals)
Total pre-Feb 2006 IDPs <sup>2</sup>	18,871 families (est. 113,226 individuals)
Number of post-Feb 2006 IDPs assessed by IOM <sup>3</sup>	7,946 families (est. 47,676 individuals)
Returnees <sup>4</sup>	626 families (est. 3,756 individuals)
Capital	Amara
Districts	Al-Kahla, Al-Maimouna, Al-Mejar Al-Kabi, Ali Al-Gharbi, Qal'at Saleh, Amara
Population <sup>5</sup>	824,147 individuals

The majority of families displaced to Missan during and after 2006 fled sectarian violence in Baghdad. In many cases, they chose to leave their homes and travel to the relatively stable southern governorate of Missan because of historical, tribal, and familial ties. They joined a large number of families displaced during the previous regime also living in the governorate.

Conditions for IDP families are difficult in Missan. Many live in informal group settlements on land they do not own, with few basic services or opportunities for work. Many IDPs are unemployed or underemployed and there are few job opportunities available, making it difficult to afford suitable housing, food, and other necessities.

While some IDPs in Missan have begun to return home, many are still waiting to feel safe enough to do so. Others would like to stay in Missan.

### Quick Facts on Missan IDPs & Returnees



- Intentions of IOM-assessed IDPs in Missan: 36% would like to return, 32% would like to stay permanently in Missan, 26% would like to move to a third location.
- IOM-assessed IDPs in Missan list shelter and access to work as priority needs.
- Nearly 10% of IOM-assessed IDP families in Missan are female-headed households.

<sup>1</sup> As per the Iraqi Ministry of Displacement and Migration.

<sup>2</sup> As per IOM Phase II Monitoring, December 2005.

<sup>3</sup> Please note that this is the number of post-February 2006 IDPs assessed by IOM, not the total number of IDPs in the governorate.

<sup>4</sup> As per IOM Returnee Monitoring.

<sup>5</sup> As per the Central Organization for Statistics and Information Technology, 2007.

### IOM Displacement Assessments

Iraq has a long history of displacement, the most recent significant event being the February 2006 bombing of the Samarra Al-Askari Mosque. Due primarily to sectarian violence, 1.6 million people were internally displaced, chiefly in 2006 and 2007, according to government figures.<sup>1</sup>

IOM field monitoring teams assess the varying needs and challenges of internally displaced persons (IDPs) and returnee communities across the eighteen Iraqi governorates. These comprehensive assessments of IDPs and returnees are conducted through Rapid Assessment questionnaires in conjunction with the assessments of Iraqi authorities and other national and international actors.

IOM seeks to ascertain and disseminate detailed information about IDP and returnee needs and conditions in each governorate. Our objective is to promote a greater understanding of displacement and return in Iraq by facilitating policy making, prioritizing areas of operation, planning emergency responses, and designing long-term programs.

To date, IOM has assessed 224,365 IDP families and identified 61,319 returnee families. Of these returnee families, 4,668 have participated in IOM in-depth needs assessment interviews. Unless otherwise stated, all data in the profile is based on IOM-assessed populations.

### Recent IOM Activity in Missan

Emergency Support to 7 Hospitals in Missan Governorate



IOM provided medical supplies to 7 hospitals in Missan in order to improve conditions for patients in treatment and recovery. The medical supplies included blankets, linens, towels and antiseptic liquid.

For more information on IOM's past activities in Missan, see *Activities in Missan* at:

[www.iomiraq.net](http://www.iomiraq.net)

## MISSAN DISPLACEMENT BACKGROUND

According to IOM assessments, most post-2006 IDPs in Missan fled to the governorate during the height of recent sectarian violence in 2006. Unlike the majority of IDPs in Iraq, almost 50% of IDPs in Missan do not believe they were directly targeted; rather, they left out of a general feeling of fear from the violence around them. 34% do believe they were targeted for religious and sectarian identity.

The vast majority (82%) of IOM-assessed IDP families in Missan are from Baghdad, and nearly 100% are Shia Arab Muslims. Many chose to go to Missan because of the calmer security situation and because they had relatives already living there. 16% of IDP families in Missan live with relatives.

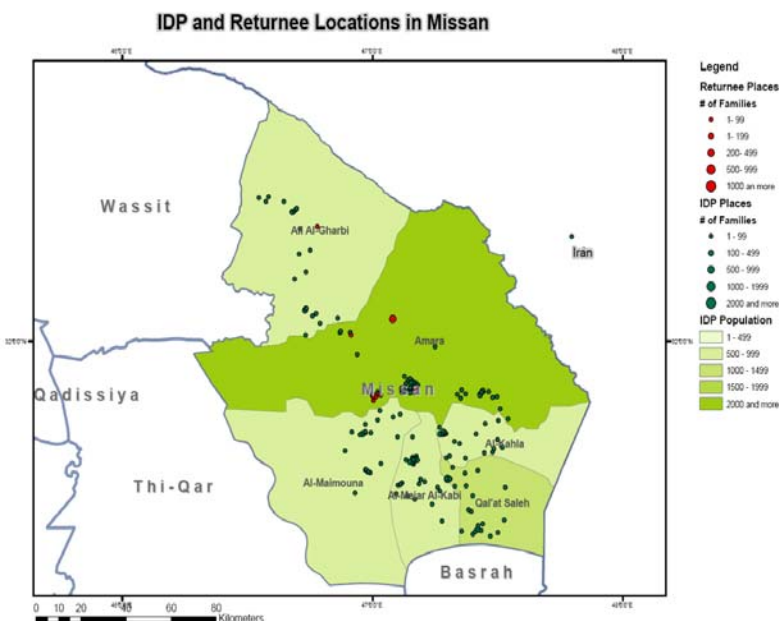
IOM has assessed 7,946 IDP families in Missan. A large number are living in Amara city center area in rented homes, while others are spread out in informal—often illegal—settlements located in more rural areas.

Missan also has a particularly large pre-2006 IDP population. Including those displaced during the previous regime, Missan saw a large influx of refugees from Iran after military operations in 2003.

Number of IDPs in Missan by District		
District	Families	%
<b>Total Missan</b>	7946	100%
Ali Al-Gharbi	604	7.6%
Al-Kahla	633	8.0%
Al-Maimouna	532	6.7%
Al-Mejar Al-Kabi	965	12.1%
Amara	3962	49.9%
Qal'at Saleh	1250	15.7%

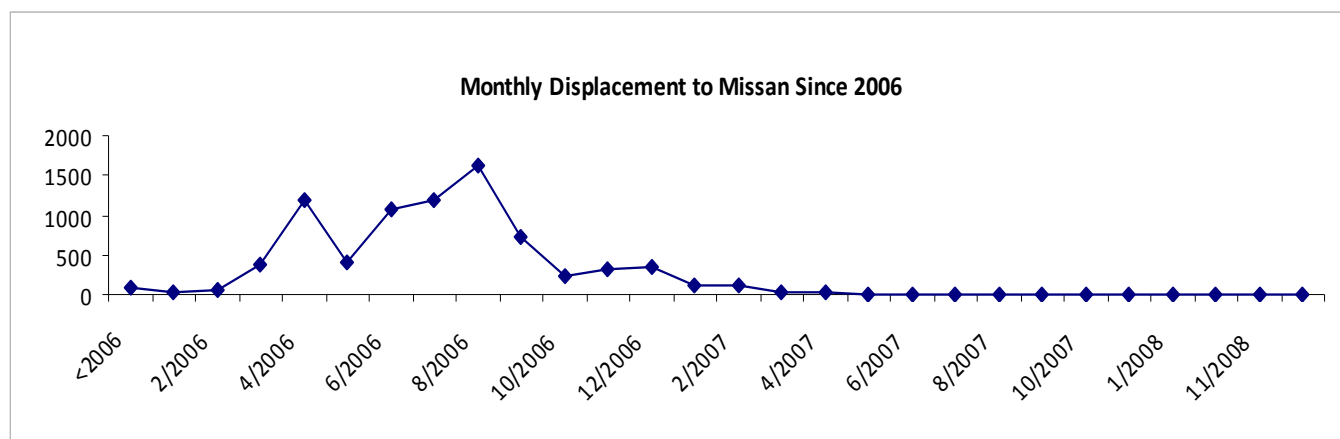
IDP Governorate of Origin	
Anbar	1.0%
Babylon	0.3%
Baghdad	81.6%
Basrah	0.2%
Diyala	8.1%
Ninewa	0.1%
Salah al-Din	6.6%
Kirkuk	1.6%
Wassit	0.6%

IDP & Returnee Locations in Missan. See final page for detail.



Reason for Being Targeted	Missan	All Iraq
Belonging to a certain ethnic group	0.0%	4.9%
Belonging to a certain religion or sect	33.6%	61.0%
Belonging to a certain social group	0.0%	1.0%
Holding a certain political opinion	0.0%	3.8%
Do not think the group was targeted	49.5%	10.3%

Reason for Displacement	Missan	All Iraq
Left out of fear	53.2%	11.1%
Armed conflict	0.3%	4.9%
Direct threats to life	2.1%	23.5%
Forced displacement	3.8%	13.7%
Generalized violence	1.8%	12.4%
No Answer	38.7%	32.0%



## MISSAN'S DISPLACED: LIVING CONDITIONS AND PRIORITY NEEDS

Like other governorates in the south of Iraq, many IDP families in Missan are living in informal group settlements. These are usually collections of crudely constructed houses built by the families themselves. They are not connected to local water, electricity, or sewage networks and the families living there are usually some of the most excluded and vulnerable people in the country.

According to IOM assessments, over 11% of IDP families in Missan live in a collective settlement or a public building. Another 31% live in housing categorized as “other,” which are often simple homes built illegally by IDPs.

For example, when a new sewage network was recently installed in several neighborhoods of Al Salam district, the informal settlements were not included, leaving them to develop their own methods for waste disposal. Puddles of sewage sometimes surround houses while children play nearby. The river running through several IDP areas in al-Salam sub-district is filled with filth. Several children are reported to have fallen in and drowned.

Finding work is a top concern of IDP families in Missan. Most are unemployed or underemployed. When IDP families can find work, most are doing daily jobs such as construction or driving a taxi. Few can find steady sources of income, leading to constant worry about being able to afford basic necessities such as monthly rent. Overall, IDP families in Missan list shelter and access to work as their priority needs. They also list other needs such as non-food and household items.

In many areas outside of city centers, health care is difficult to obtain because health care centers are far away or poorly equipped.

Employment	Missan	All Iraq
At least one member of the family has a job	27.9%	33.5%
No family member has a job	72.1%	66.5%

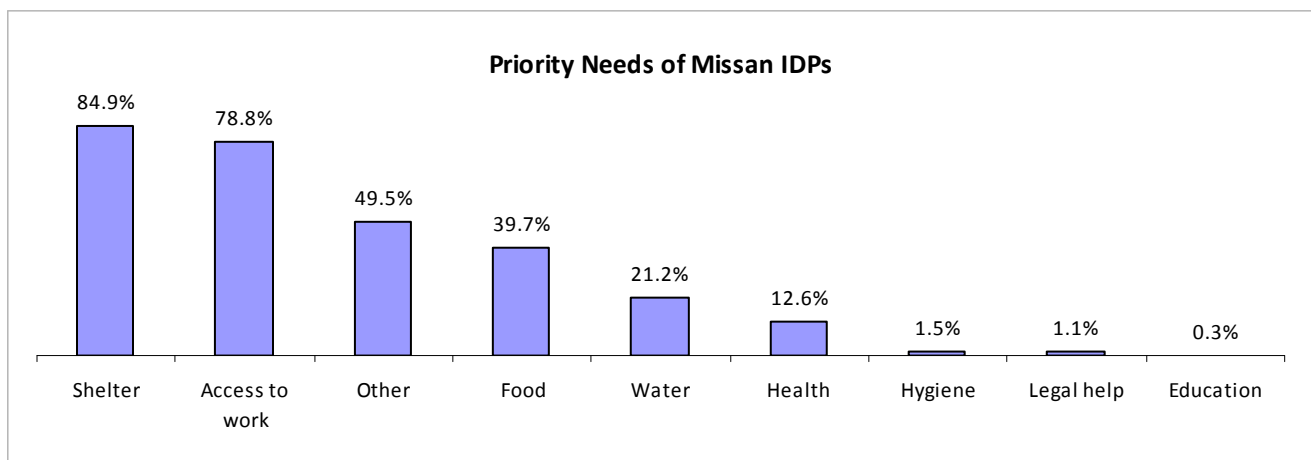
PDS Access	Missan	All Iraq
No Answer	17.2%	19.7%
Not at all	1.3%	15.3%
Sometimes	23.2%	32.2%
Yes, always	58.3%	32.8%

Electricity	Missan	All Iraq
No Electricity	1.6%	3.6%
1-3 hours per day	8.5%	25.3%
Four or more hours per day	72.2%	51.1%
No Answer	17.7%	19.9%

Water Source	Missan	All Iraq
Municipal water (underground pipes)	79%	87.7%
Other Sources	36%	5.3%
Rivers, streams or lakes	35%	12.6%
Water tanks / trucks	18%	25.8%
Open / broken pipe	2%	12.4%



Living Structure (by district)								
District	Tent In Camp	Collective Town Settlement	Tent Near House of Host	Former Military camp	Public building	Host House	Rented house	Other
Total	0.0%	8.3%	0.2%	0.0%	2.9%	16.2%	41.3%	31.1%
Ali Al-Gharbi	0.0%	10.9%	0.0%	0.0%	2.8%	15.7%	38.6%	31.5%
Al-Kahla	0.0%	7.7%	0.0%	0.0%	2.2%	22.4%	47.4%	20.2%
Al-Maimouna	0.0%	7.1%	0.0%	0.0%	3.6%	16.9%	30.5%	41.9%
Al-Mejar Al-Kabi	0.0%	14.3%	0.0%	0.0%	3.9%	26.3%	30.1%	25.4%
Amara	0.1%	7.6%	0.4%	0.0%	2.0%	14.0%	47.5%	28.4%
Qal'at Saleh	0.0%	5.4%	0.0%	0.0%	4.9%	12.1%	33.3%	44.4%



## MISSAN: IDP DEMOGRAPHICS

Women and children are particularly affected by displacement and the difficult living conditions in Missan. Due to conservative cultural practices in the area, women who must help to support their families or who are the sole breadwinner of the family face many challenges in finding work that is appropriate for them.



Schools in Missan, already overburdened, are now even more crowded due to the influx of IDP families in the governorate. They need to be expanded and rehabilitated in order to be appropriate places for children to learn.

To the left, a boys primary classroom in Hay al Batool.

Female-Headed Households (by district)	
District	Percentage
Total	9.7%
Ali Al-Gharbi	9.4%
Al-Kahla	10.9%
Al-Maimouna	10.5%
Al-Mejar Al-Kabi	8.0%
Amara	9.8%
Qal'at Saleh	9.9%

IDPs by Age and Gender			
Age	Female	Male	Total
Under 1 year old	965	836	1801
1 to 4 years old	2591	2718	5309
5-17 years old	5440	5819	11259
18-60 years old	6843	6639	13482
Over 60 years old	967	852	1819

## RETURNEES AND RETURN POTENTIAL

Although the number of post-2006 displacements from Missan is small, IOM monitors have identified 626 returnee families in Missan, most of whom have returned to the center of Amara. Sample interviews with these families show that housing, food, and household non-food items are their priority needs.

The table below shows the intentions of the 7,946 IOM-assessed IDP families in Missan. While some families have already begun to return to their places of origin, many are still waiting to judge the security situation. 36% of families said they would like to return to their places of origin, mostly in Baghdad. However, they are waiting until they feel safe enough to do so. In the meantime, IDP families need continued assistance in order to support themselves in their places of displacement.

Returnee Numbers in Missan by District		
District	Number of Families	Percentage
Missan Total	626	100%
Ali Al-Gharbi	41	6.5%
Amara	585	93.5%

Missan IDP Settlement Intentions

District	Integrate into the current location	Resettle in a third location	Return to their place of origin	Waiting to Decide
Total	32.0%	25.7%	35.5%	6.7%
Ali Al-Gharbi	26.2%	38.1%	30.6%	4.8%
Al-Kahla	41.5%	27.0%	30.5%	0.9%
Al-Maimouna	24.2%	40.6%	26.7%	8.5%
Al-Mejar Al-Kabi	30.8%	30.2%	20.2%	18.9%
Amara	30.3%	21.7%	41.7%	6.2%
Qal'at Saleh	39.7%	22.1%	36.4%	1.8%

Of those that intend to return, to which governorate would they return?

Anbar	0.7%
Babylon	0.1%
Baghdad	89.0%
Basrah	0.5%
Diyala	5.1%
Ninewa	0.2%
Salah al-Din	1.1%
Kirkuk	2.2%
Wassit	1.1%

Please note that displacement and return are occurring on a continuous basis, and IOM strives to update this information as frequently as possible. Through its monitoring and needs assessments, IOM has also developed periodic displacement updates, yearly and mid-year reviews, returnee needs assessments, and other reports. For these and information on the IOM's needs assessment methodology, see <http://www.iomiraq.net/idp.html>

For further information on IDPs and returnees in Iraq, please contact Rex Alamban, Head of IOM Iraq Joint Operations Cell at [ralamban@iom.int](mailto:ralamban@iom.int) or Liana Paris, IOM Monitoring Officer, at [lparis@iom.int](mailto:lparis@iom.int) (+962 6 565 9660 extensions 1067 and 1022).

# IDP and Returnee Locations in Missan

